

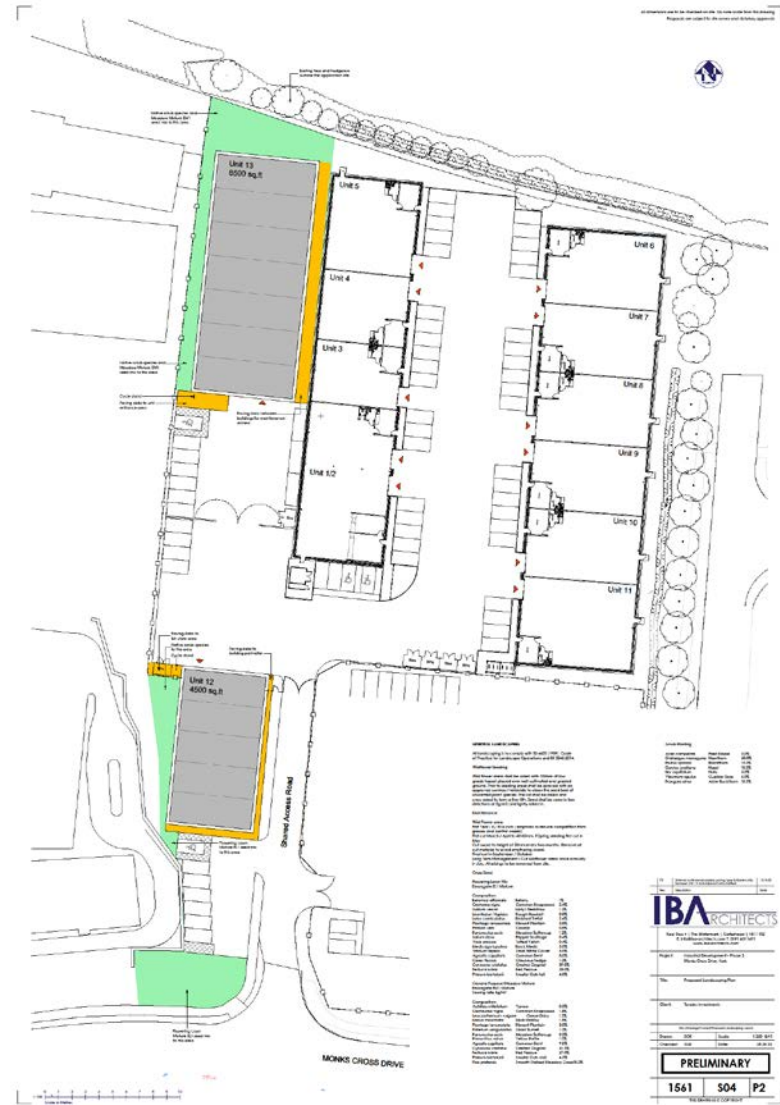


Planning Committee B

22/01161/FULM

Site To The West Of MX Park, Monks Cross Drive, Huntington

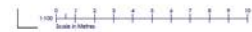
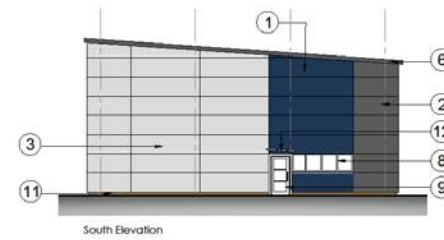
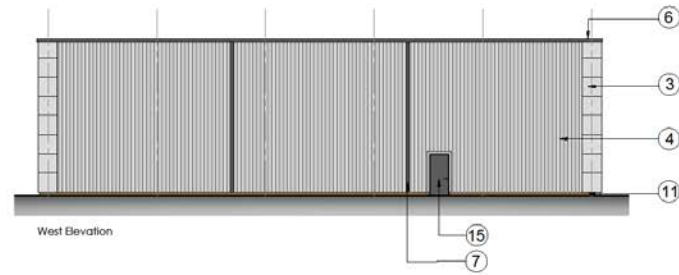
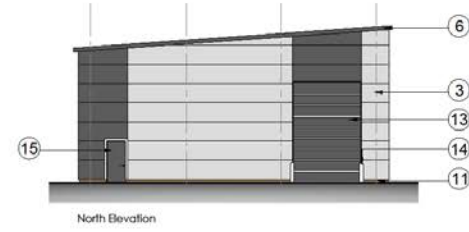
Site plan



Unit 12



All dimensions are to be checked on site. Do not scale from the drawing.
Proposals are subject to the safety and stability approval.

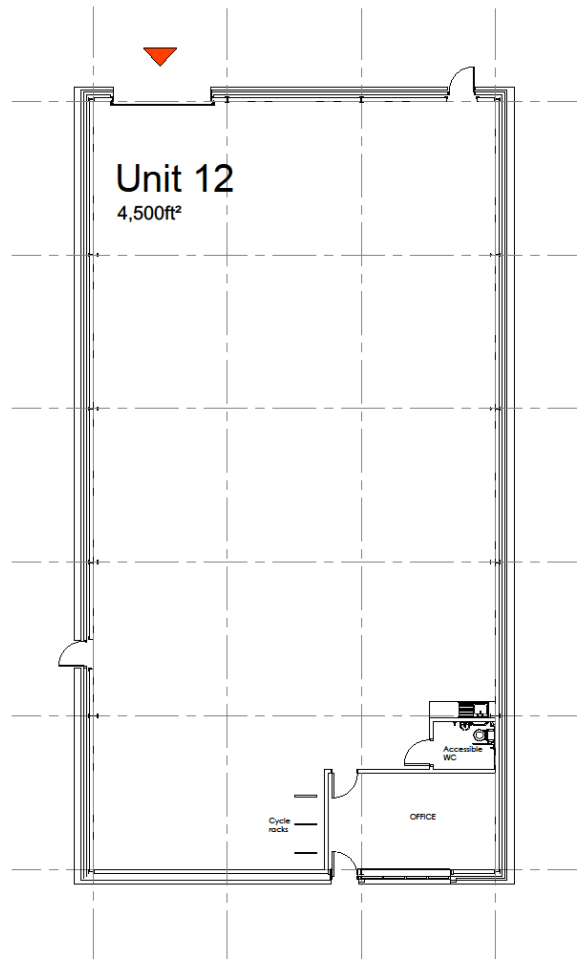


Materials

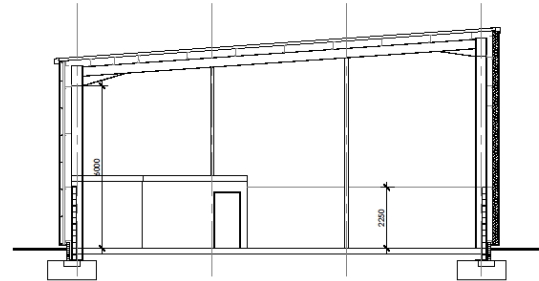
- ① All composite structural panels
Colour: RAL 5013 Signal Blue
- ② All composite structural panels
Colour: Safety Grey 01 10 8 20
- ③ All composite structural panels
Colour: RAL 5020 (Safety Blue)
- ④ Safety net (explosion ball-up coating)
Colour: RAL 5009 (Safety Green)
- ⑤ Powder coated aluminium gutter
Colour: BS 18 8 20
- ⑥ Powder coated aluminium verge
Colour: BS 18 8 20
- ⑦ Glass Panels - double glazed aluminium framework
Colour: BS 18 8 20
- ⑧ Powder coated anodized double glazed aluminium framed windows, Colour: BS 18 8 20
- ⑨ Powder coated aluminium double glazed doors
Colour: BS 18 8 20
- ⑩ Powder galvanneal ball-up roof cladding
Colour: RAL 7035 (Grey/White Grey)
- ⑪ Framing brackets to Local Authority approval
- ⑫ Glass entrance canopy
- ⑬ Powder coated aluminium anodized overhead door
Colour: BS 18 8 20
- ⑭ Safety Netting
- ⑮ Powder coated steel fire exit door
Colour: BS 18 8 20

No.	Description of work (numbered to match with)	DATE
1	1561	08/10/22
By	1561	08/10/22
Checked		
IBA ARCHITECTS		
East River & The Watermark Coleridge & Hillier 1561 Broadway, Suite 1100 New York, NY 10038 www.ibaarchitects.com		
Project:	Industrial Development - Phase 2	
	Merck One Office Park	
Title:	Exterior	
	Unit 12	
Client:	Merck One Office Park	
Drawn:	GSB	Scale: 1:100 (A4)
Checked:	SKK	Date: 30/10/22
PRELIMINARY		
1561	(0)02	P2
INDUSTRIAL DEVELOPMENT		

Unit 12



All dimensions are to be checked on site. Do not scale from this drawing
Proposals are subject to the survey and statutory approvals



P4	Spacing of cycle racks increased	12.10.22
P3	Cycle racks added	12.09.22
P2	Office and toilet section revised	10.03.22
P1	Site plan	20.12.21
Rev	Description	Date



Keel Row 4 | The Watermark | Gateshead | NE11 9JZ
E: info@iba-architects.com T: 0191 461 1411
www.iba-architects.com

Project: Industrial Development - Phase 2
Monks Cross Drive, York

Title: Plan and Section
Unit 12

Client: Tonley Investments

Drawn: GRS	Scale: 1:100 @A2
Checked: SGK	Date: 20.12.21

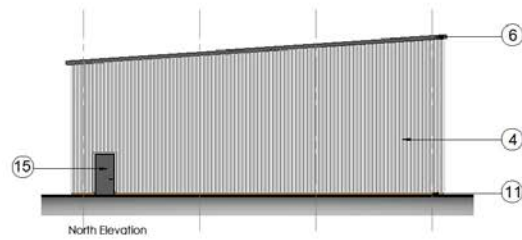
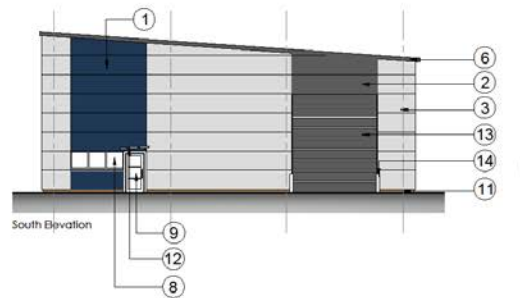
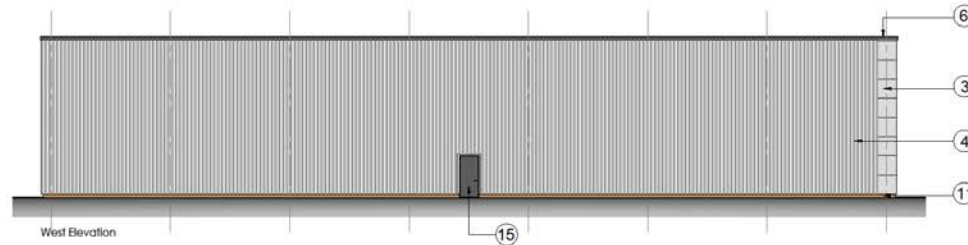
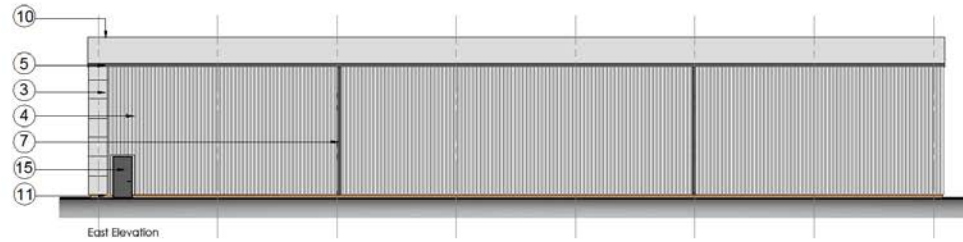
PRELIMINARY

1561 (0)01 P4

THIS DRAWING IS COPYRIGHT

Unit 13

All dimensions are to be checked on site. Do not rely on this drawing.
Proposals are subject to the survey and statutory approvals.



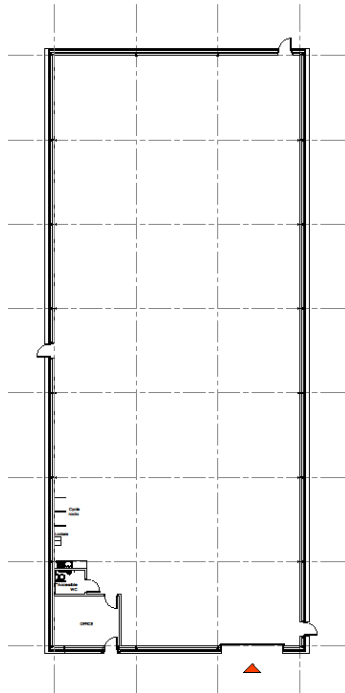
Materials

- ① Flat composite horizontal panels
Colour: RAL 7035 (Imperial blue)
- ② Flat composite horizontal panels
Colour: RAL 7035 (Imperial blue)
- ③ Flat composite horizontal panels
Colour: RAL 7035 (Imperial blue)
- ④ Flat composite horizontal panels
Colour: RAL 7035 (Imperial blue)
- ⑤ Vertically ribbed aluminium built-up cladding
Colour: RAL 7035 (Imperial blue)
- ⑥ Powder coated aluminium gutter
Colour: RAL 7035 (Imperial blue)
- ⑦ Powder coated aluminium verge
Colour: RAL 7035 (Imperial blue)
- ⑧ Glass panels - Powder coated aluminium aluminium
tinted windows. Colour: RAL 7035 (Imperial blue)
- ⑨ Powder coated aluminium double glazed units
Colour: RAL 7035 (Imperial blue)
- ⑩ Safety glazing - Powder coated aluminium
Colour: RAL 7035 (Imperial blue)
- ⑪ Fixing brackets to suit authority approval
- ⑫ Slated window canopy
Colour: RAL 7035 (Imperial blue)
- ⑬ Powder coated aluminium weather overhead door
Colour: RAL 7035 (Imperial blue)
- ⑭ Safety screens
- ⑮ Powder coated steel fire exit door
Colour: RAL 7035 (Imperial blue)

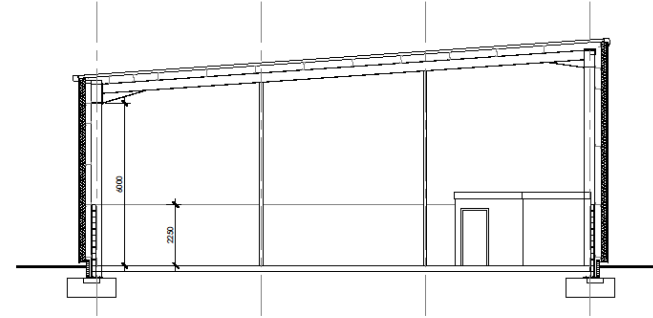
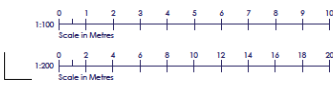
IBARCHITECTS	
Karl Ross & J. The Workshop Collaborative 14711 452 8. andrew@ibarchitects.com 0181 441 1411 www.ibarchitects.com	
Project:	Industrial Development - Phase 2 North Cross Street York Phase 2
Site:	Beaufort Unit 13
Client:	Stanley Investment
Drawn:	GSL
Checked:	SGK
Scale:	1:100 (A4)
Date:	20.12.21
PRELIMINARY	
1561	(0)04 P1

Unit 13

All dimensions are to be checked on site. Do not scale from this drawing.
Proposals are subject to site survey and statutory approvals.



Unit 13 Floor Plan
1:200



Unit 12 Section
1:100

P3	Issued for construction	13.10.22
P2	Additional work completed	12.08.22
P1	Final Issue	20.12.21
Rev	Description	Date

IBA ARCHITECTS

Keel Row 4 | The Watermark | Gateshead | NE11 9JZ
E: info@iba-architects.com T: 0191 461 1411
www.iba-architects.com

Project: Industrial Development - Phase 2
Monks Cross Drive: Tok

Title: Plan and Section
Unit 12

Client: Tansley Investments

Drawn:	GRS	Scale:	Varies @A2
Checked:	SGK	Date:	20.12.21

PRELIMINARY

1561 (0)03 P3

THE DRAWING IS COPYRIGHT